

**~ WTIA OzWeld School of Welding Technology (SWT) ~**

**FACT SHEET: IWE-01**

**Job Title:** Responsible Welding Coordinator (RWC) - Comprehensive Technical Knowledge

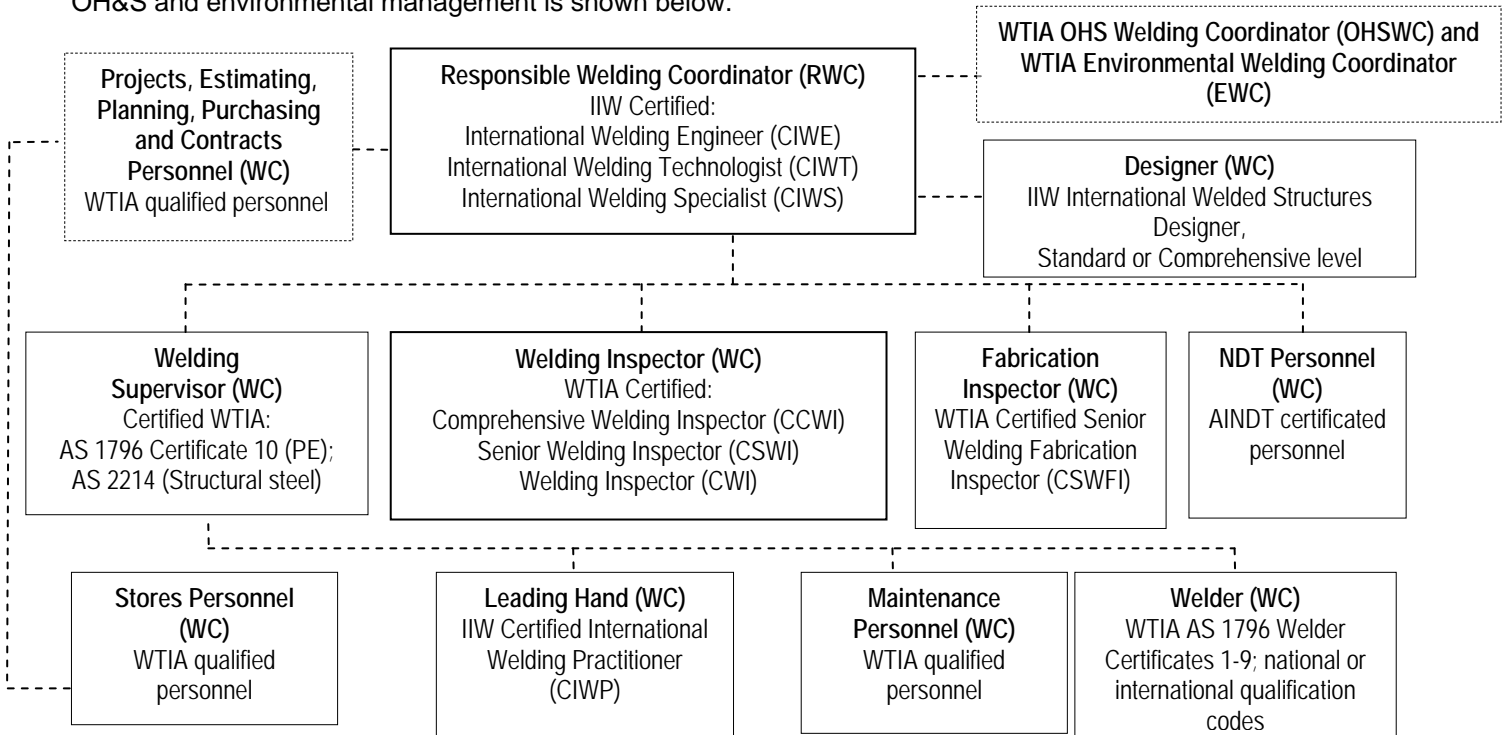
**Qualification and Certification:** IIW International Welding Engineer (IWE) and IIW Certified IWE

**Job Description:**

- Perform, supervise and/or oversee all company welding and welding-related activities;
- Have overall responsibility for coordination of all welding and welding-related activities;
- Be authorised to sign on behalf of the organisation in all welding quality related matters or delegate such signing e.g. goods release for despatch, inspection sign-off, accepting technical welding requirements, or verifying that the organisation has complied with all relevant quality considerations in the production of the product.

**Welding Coordination Team (WCT): RWC (Comprehensive Level)**

A typical company WCT with team members sharing, with the Responsible Welding Coordinator (RWC), responsibility for quality to satisfy compliance with AS/NZS ISO 3834:2008 *Quality requirements for fusion welding of metallic materials* and ISO 14731:2006 *Welding coordination – Tasks and responsibilities* as well as productivity, OH&S and environmental management is shown below.



The key welding coordination tasks & responsibilities of a RWC in a company are shown in Table 1. More detailed activities are given in ISO 14731 or WTIA TGN-3834-05.

<ul style="list-style-type: none"> <li>• Review of Requirements</li> <li>• Technical Review</li> <li>• Subcontracting</li> <li>• Welding Personnel</li> <li>• Equipment</li> <li>• Production Planning</li> <li>• Qualification of the Welding Procedures</li> <li>• Welding Procedure Specifications</li> <li>• Work Instructions</li> <li>• Welding Consumables</li> </ul>	<ul style="list-style-type: none"> <li>• Materials</li> <li>• Inspection and Testing Before Welding</li> <li>• Inspection and Testing During Welding</li> <li>• Inspection and Testing After Welding</li> <li>• Post-weld Heat Treatment</li> <li>• Non-conformance and Corrective Actions</li> <li>• Calibration and Validation of Measuring, Inspection and Testing Equipment</li> <li>• Identification and Traceability</li> <li>• Quality Records</li> </ul>
--	--

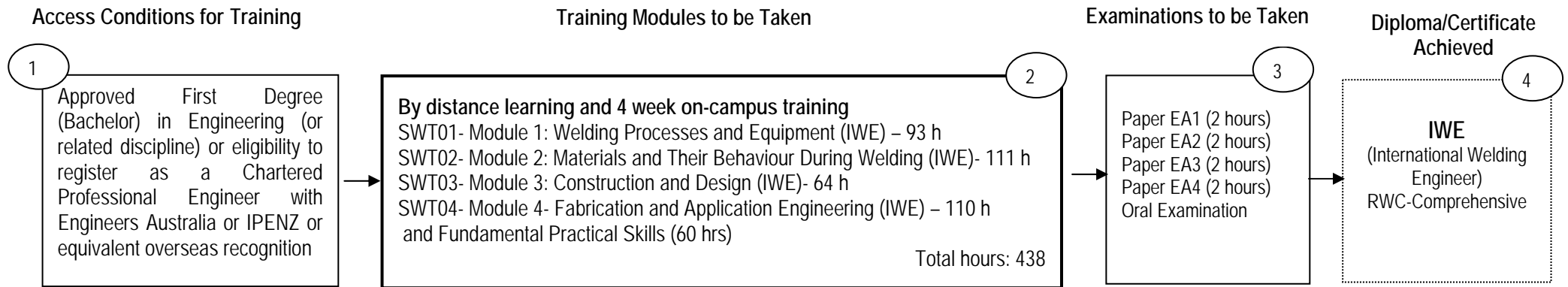
Table 1: Key welding coordination tasks and responsibilities

**“WTIA National Skills Campaign”**

**Targeting Skills Needs in all Regions to Keep Jobs in Australia**

DISCLAIMER While every effort has been made and all reasonable care taken to ensure the accuracy of the material contained herein, the WTIA shall not be held to be liable or responsible in any way whatsoever and expressly disclaims any liability or responsibility for any injury or loss of life, any loss or damage costs or expenses, howsoever incurred by any person whether the reader of this work or otherwise including but without in any way limiting any loss or damage costs or expenses incurred as a result of or in connection with the reliance whether whole or partial by any person as aforesaid upon any part of the contents of this publication. WTIA reserves the right to cancel training courses due to insufficient registrations or other reasons beyond its control. Confirmation of bookings will be sent to delegates upon registration. WTIA also reserves the right to refuse registrations.

**RESPONSIBLE WELDING COORDINATOR (RWC) (IWE)**  
**Pre-requisites, Access Conditions, Training and Examination Requirements for International Welding Engineer (IWE)**



**International Welding Engineer – Responsible Welding Coordinator Comprehensive Level**

- 1 If you wish to continue your career to the level of a Certified International Welding Engineer, then you need to meet the access conditions of “Approved First Degree (Bachelor) in Engineering (or related discipline) or eligibility to register as a Chartered Professional Engineer with Engineers Australia or IPENZ or equivalent overseas recognition”
- 2 You enrol on the WTIA distance learning course for IWE International Welding Engineer (IWE). You undertake the four courses SWT 01 to 04 by covering 16 distance learning modules and four one week face-to-face modules as well as 60 hours of practical training and education consisting of:
  - Oxy-acetylene Welding and Cutting
  - Manual Metal Arc Welding
  - Gas Tungsten Arc Welding
  - Metal Inert Gas/Metal Active Gas Welding
  - Flux Cored Arc Welding
  - Demonstrations or video presentations on other welding processes
 With appropriate previous training experiences (Recognition of Prior Learning) you can apply for exemption from all or part of the practical training.
- 3 Upon successful completion of each face-to-face module, you can write the appropriate examination (Papers EA1, EA2, EA3 or EA4). For EA1 you must have completed the 60-practical training before writing the examination. Also, EA4 must be written last
- 4 On successful completion of the four examinations with a minimum 60% in each examination as well as passing an oral examination, you will be awarded the International Welding Engineer (IWE) qualification. You now meet the minimum requirement for a Responsible Welding Coordinator to AS/NZS ISO 3834:2008 “Quality requirements for fusion welding of metallic materials” and ISO 14731 “Welding coordination – Tasks and responsibilities”. With appropriate experience you can then apply to WTIA for recognition as a “Certified International Welding Engineer” and continue your career and professional development.

## ~ WTIA OzWeld School of Welding Technology (SWT) ~

### FACT SHEET: IWT-01

**Job Title:** Responsible Welding Coordinator (RWC) - Specific Technical Knowledge

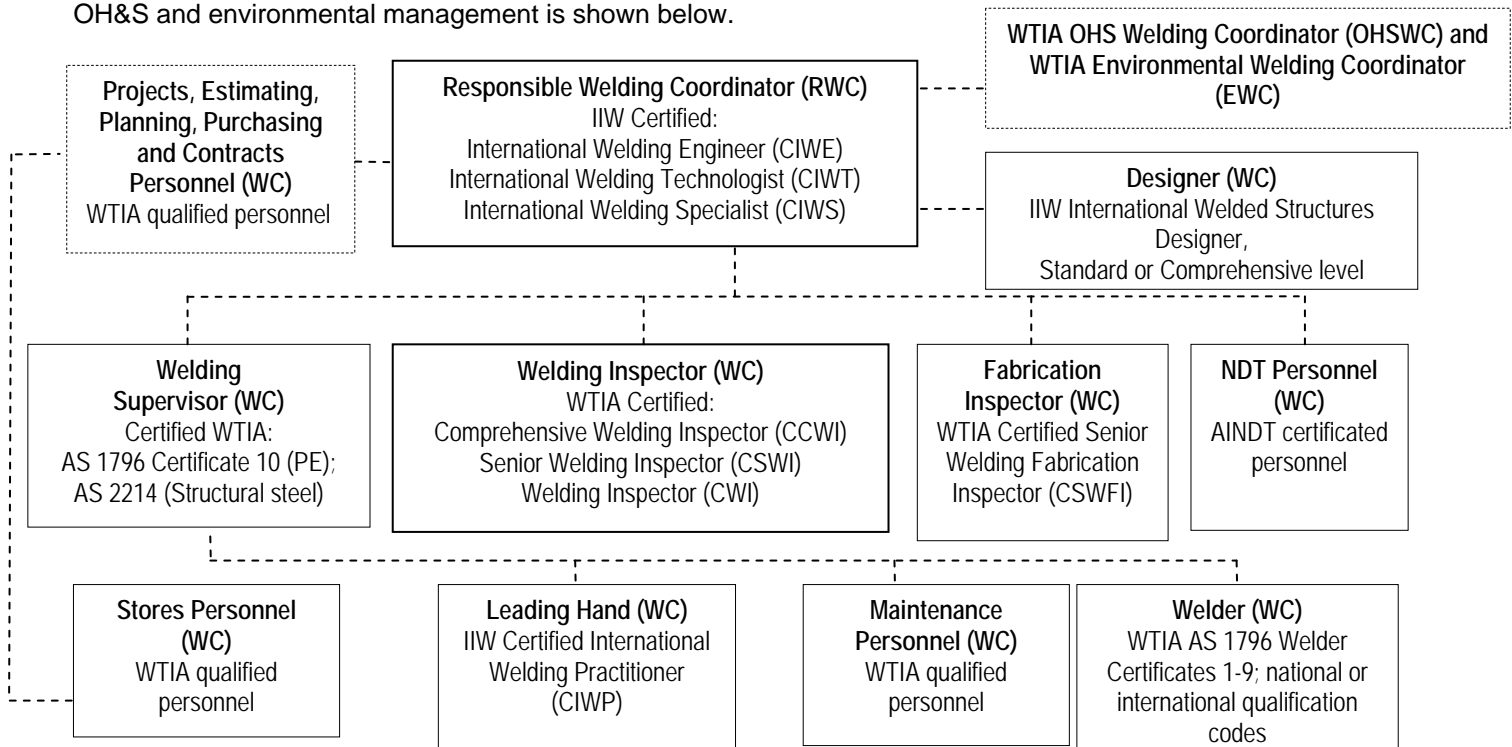
**Qualification and Certification:** IIW International Welding Technologist (IWT) and IIW Certified IWT

**Job Description:**

- Perform, supervise and/or oversee all company welding and welding-related activities;
- Have overall responsibility for coordination of all welding and welding-related activities;
- Be authorised to sign on behalf of the organisation in all welding quality related matters or delegate such signing e.g. goods release for despatch, inspection sign-off, accepting technical welding requirements, or verifying that the organisation has complied with all relevant quality considerations in the production of the product.

### Welding Coordination Team (WCT): RWC (Standard Level)

A typical company WCT with team members sharing, with the Responsible Welding Coordinator (RWC), responsibility for quality to satisfy compliance with AS/NZS ISO 3834:2008 *Quality requirements for fusion welding of metallic materials* and ISO 14731:2006 *Welding coordination – Tasks and responsibilities* as well as productivity, OH&S and environmental management is shown below.



The key welding coordination tasks & responsibilities of a RWC in a company are shown in Table 1. More detailed activities are given in ISO 14731 or WTIA TGN-3834-05.

<ul style="list-style-type: none"> <li>• Review of Requirements</li> <li>• Technical Review</li> <li>• Subcontracting</li> <li>• Welding Personnel</li> <li>• Equipment</li> <li>• Production Planning</li> <li>• Qualification of the Welding Procedures</li> <li>• Welding Procedure Specifications</li> <li>• Work Instructions</li> <li>• Welding Consumables</li> </ul>	<ul style="list-style-type: none"> <li>• Materials</li> <li>• Inspection and Testing Before Welding</li> <li>• Inspection and Testing During Welding</li> <li>• Inspection and Testing After Welding</li> <li>• Post-weld Heat Treatment</li> <li>• Non-conformance and Corrective Actions</li> <li>• Calibration and Validation of Measuring, Inspection and Testing Equipment</li> <li>• Identification and Traceability</li> <li>• Quality Records</li> </ul>
--	--

Table 1: Key welding coordination tasks and responsibilities

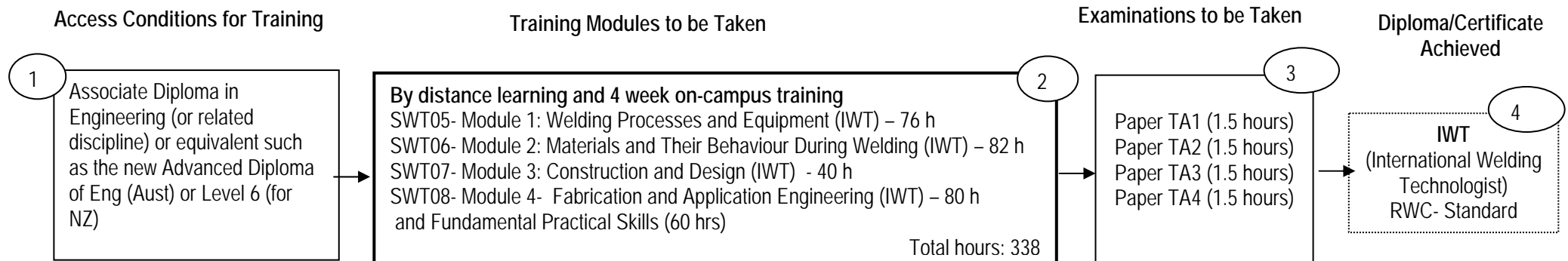
*“WTIA National Skills Campaign”*

**Targeting Skills Needs in all Regions to Keep Jobs in Australia**

DISCLAIMER While every effort has been made and all reasonable care taken to ensure the accuracy of the material contained herein, the WTIA shall not be held to be liable or responsible in any way whatsoever and expressly disclaims any liability or responsibility for any injury or loss of life, any loss or damage costs or expenses, howsoever incurred by any person whether the reader of this work or otherwise including but without in any way limiting any loss or damage costs or expenses incurred as a result of or in connection with the reliance whether whole or partial by any person as aforesaid upon any part of the contents of this publication. WTIA reserves the right to cancel training courses due to insufficient registrations or other reasons beyond its control. Confirmation of bookings will be sent to delegates upon registration. WTIA also reserves the right to refuse registrations.

## RESPONSIBLE WELDING COORDINATOR (RWC) (IWT)

Pre-requisites, Access Conditions, Training and Examination Requirements for International Welding Technologist (IWT)



### International Welding Technologist – Responsible Welding Coordinator, Standard Level

- 1 If you wish to continue your career to the level of a Certified International Welding Technologist, then you need to meet the access conditions of “an Associate Diploma in Engineering (or related discipline) or equivalent such as the new Advanced Diploma of Eng (Aust) or Level 6 (for NZ)”
- 2 You enrol on the WTIA distance learning course which is the same as that for the IIW International Welding Engineer (IWE). You undertake the four courses SWT 05 to 08 by covering 16 distance learning modules and 4 one week face-to-face modules as well as 60 hours of practical training and education consisting of:
  - Oxy-acetylene Welding and Cutting
  - Manual Metal Arc Welding
  - Gas Tungsten Arc Welding
  - Metal Inert Gas/Metal Active Gas Welding
  - Flux Cored Arc Welding
  - Demonstrations or video presentations on other welding processesWith appropriate previous training experiences (Recognition of Prior Learning) you can apply for exemption from all or part of the practical training.
- 3 Upon successful completion of each face-to-face module, you can write the appropriate IWT examination (Papers TA1, TA2, TA3 or TA4). For TA1 you must have completed the 60-practical training before writing the examination. Also, TA4 must be written last
- 4 On successful completion of the four examinations with a minimum of 60% in each examination, you will be awarded the International Welding Technologist (IWT) qualification. You now meet the minimum recommended qualification requirements for a Responsible Welding Coordinator Standard Level to AS/NZS ISO 3834:2008 “Quality requirements for fusion welding of metallic materials” and ISO 14731 “Welding coordination – Tasks and responsibilities”. With appropriate experience you can then apply to WTIA for recognition as a “Certified International Welding Technologist” and continue your career and professional development.



Unit 50, 8 Avenue of the Americas, Newington, NSW 2127 PO Box 6165, Silverwater, NSW, 1811 (ABN 69 003 696 526)  
Phone: + 61 (0)2 9748 4443 Fax: + 61 (0)2 9748 2858 Email: info@wtia.com.au URL: <http://www.wtia.com.au>

## ~ WTIA OzWeld School of Welding Technology (SWT) ~

### FACT SHEET: IWE-02/IWT-02

#### FLEXIBLE DELIVERY COURSES FOR EXAMINATION AND QUALIFICATION AS INTERNATIONAL WELDING ENGINEER (IWE) OR INTERNATIONAL WELDING TECHNOLOGIST (IWT)

The need for professionally qualified welding engineers and technologists has been widely recognised on a global basis. AS/NZS ISO 3834:2008 "Quality requirements for fusion welding of metallic materials" and ISO 14731 "Welding coordination - Tasks and responsibilities" call up the IWE and IWT as the minimum recommended qualifications for the Responsible Welding Coordinator (RWC) at the Comprehensive and Standard Levels respectively.

Whilst the recognition of the qualifications and the demand for the courses has been increasing in Australia the number of students who are able to complete the courses face to face is restricted in Australia by demographic considerations. In order to cater for the widely distributed student population the University of Wollongong developed a flexible (distance) delivery alternative to full face-to-face course. This course was developed by UOW with the support of the CRC for Welded Structures (CRC-WS) over the last 10 years and successfully completed by more than 50 students. Following the closure of CRC-WS the course will no longer be available from UOW but has been licensed to Cranfield University in the UK and WTIA in Australia. It uses the latest techniques of learner-directed teaching, student technical support and follows the syllabus prescribed by the International Institute of Welding (IIW) for the education of International Welding Engineers and Technologists in the IIW guideline "Personnel With Responsibility for Welding Coordination"

#### What does "Flexible Delivery" mean?

Flexible delivery combines the most appropriate teaching materials to enable students to study in their own time at remote locations. In the case of the IWE and IWT courses, the backbone of the teaching material is in the form of 12 learner-directed texts or study guides. Unlike books or lecture notes the study guides are designed to direct the students through the learning material (which may include external readings) and check progress frequently, using self-assessment questions.

To supplement and reinforce the text material four one week face-to-face units are included in the course. These subjects are attended after the completion of the subjects which make up each of the four modules of the IIW syllabus.

- Welding Processes and Equipment
- Materials and their Behaviour During Welding
- Construction and Design
- Fabrication and Applications Engineering

They allow presentation of multimedia material (videos and computer software), laboratory classes and lectures from industry experts, group case studies, revisions and tutorials. Each face-to-face unit includes a written progress examination on the previous text-based module.

In addition, 60 hours of practical welding and demonstration is required by IIW and this may be obtained from approved local providers ( e.g. TAFEs). In summary the course consists of:

- 12 text-based distance delivery modules (learner-directed texts)
- 4 weeks of face-to-face delivery
- 2 weeks of practical welding training and demonstrations

#### Text-based modules

Each text-based module is the equivalent of 30 hours of face-to-face contact plus the equivalent of 90 hours self study and assignment. The texts are modelled on the "Introduction to Materials and Joining" which was the first subject produced and has been "tested" by more than 250 students as an Undergraduate elective at the University of Wollongong. The study guides are written by authors from the University and industry. Guided study of additional resource materials (text book and papers) is incorporated into the texts. The University of Wollongong Centre for Educational Development and Interactive Resources (CEDIR) produced the text material; providing guidance on education techniques prior to final production. The contents of the modules correspond to the IIW Guideline IAB-252-07 "Personnel with Responsibility for Welding Coordination"

## **Practical Welding Training**

The 60 hour practical training is mandatory for IIW IWE & IWT candidates. In Australia, the TAFE course NBB 09 offers a suitable basis for this training. Alternatively, students may satisfy the practical training requirements by completing other courses such as AS 1796 Certificates 1-9 or similar.

Students who have already undergone other courses may request exemption from the practical training.

### **Face-to-Face component**

All students are required to attend 4 one-week "face-to-face" modules during the course. This component consists of four sessions and aims to supplement the distance delivery material by lectures from industry experts, laboratory exercises, case studies, industry visits and presentations on advanced joining technology.

### **Telephone and Email Technical Support**

A technical support system has been established at WTIA. Students can access some:

- Updated information and technical support on the coursework;
- Multi-choice assessment tests and progress on student feedback.

This component of the course enables interaction between students and teachers and takes the place of normal face to face tutorials.

## **TABLE OF COURSE CONTENTS**

### **ENGG901 - Introduction to Materials Welding and Joining Processes**

1. An introduction to materials welding and joining.
2. Health and safety in welding and cutting operations.
3. Introduction to physics of welding arcs.
4. Electro technology for welding.
5. The effect of joining on materials.
6. Weldability of carbon and alloy steels.
7. Weldability of non-ferrous materials.
8. Mechanical testing and non-destructive testing.
9. Introduction to fracture mechanics and behaviour of welds under load.
10. Joint design and terminology.
11. Welding economics.
12. Quality assurance and ISO 9000/1/2/3.
13. Control of welding.
14. Repair and reclamation by welding.
15. Advanced joining techniques.

Introduction to welding and joining technology. Classification of welding processes, applications; typical problems, health and safety issues. Introduction to fusion and pressure welding processes; adhesive bonding, soldering and brazing; joining process physics. Review of basic electrics and electronics; arc characteristics and control. Introduction to behaviour of metals during welding. Introduction to mechanical testing and NDT. Basic joint design and testing. Quality assurance of joining techniques. Introduction to reclamation repair by welding. Introduction to advanced welding technology. Introduction to Fracture Mechanics

### **ENGG902 - Fusion Welding Processes (Part 1)**

1. The Arc.
2. Process principles GTAW.
3. Advanced GTAW.
4. Power sources and equipment GTAW.
5. Plasma arc welding and cutting.
6. Electron beam welding.
7. Laser welding and cutting.

Introduction to gas shielded welding; process principles of GTAW welding; shielding gases; effect of gases on arc characteristics; filler metals; standards; typical problems; health and safety issues. Tungsten inert gas (TIG) welding; power sources; process factors; joint design; specifications; applications and typical problems; health and safety factors. Plasma, electron beam, laser welding and cutting. Advanced TIG welding.

### **ENGG903 - Other Joining Processes**

1. Cold pressure, ultrasonic and explosive welding and diffusion bonding.
2. Stud welding and mechanical fasteners.
3. Resistance welding; weld-bonding; ERW and flash butt welding.
4. Oxy-fuel welding.
5. Cutting and other edge preparation processes.
6. Friction welding; friction stir welding.
7. MIAB welding

8. Brazing.
9. Soldering.
10. Pre-heating; fuel gas, electric equipment and techniques.

### **ENGG904 - Fusion Welding Processes (Part 2)**

1. Metal transfer principles.
2. Manual metal arc welding (shielded metal arc welding - SMAW).
3. Gas metal arc welding (GMAW) - principles, operation and applications.
4. Advanced GMAW.
5. Submerged arc welding (SAW) - principles, operation and applications.
6. Advanced submerged arc welding (SAW).
7. Power sources, GMAW, MMA, SAW, FCAW.
8. Flux cored arc welding (FCAW).
9. Electroslag welding.

Gas metal arc welding (GMAW); metal inert gas (MIG) welding; metal active gas (MAG) welding; power sources; process factors; special techniques; joint design; specifications; applications; typical problems; health and safety issues. Metal transfer. Manual metal arc (MMA) welding; (SMAW, MMAW); power sources; process factors; electrode coatings; joint design; specifications; applications and typical problems; health and safety factors. Submerged arc welding (SAW); power sources; process factors; joint design; specifications; applications; typical problems; health and safety issues. Advanced GMAW, FCAW. Electroslag welding; process factors; applications and limitations.

### **ENGG905 - Introduction to Behaviour of Metals During Welding (Part 1)**

1. Structure and properties of pure metals.
2. Alloys and phase equilibrium diagrams.
3. Structure of the welded joint.
4. Iron-carbon alloys.
5. Manufacture and designation of steels.
6. Plain carbon and carbon-manganese steels.
7. Heat treatment of base metals and welded joints.
8. Cracking phenomena in steels.
9. Fine grained (HSLA) steels - development.
10. Thermo mechanically treated steels.
11. Application of structural and high strength steels.

Structures and properties of metals; alloys and phase diagrams; iron-carbon alloys; heat treatment of steels; microstructures of welded joints; embrittlement and cracking in steels. Structural steels; fine grained steels; thermomechanically processed steels.

### **ENGG906 - Behaviour of Metals During Welding (Part 2)**

1. Introduction to corrosion.
2. Nickel and nickel alloys.
3. Low alloy steels for low temperature (cryogenic) use.
4. Low alloy creep resistant steels.
5. High-alloyed (stainless) steels.
6. Creep resist and heat resistant steels.
7. Welding of castings - cast steel and cast iron.
8. Joining dissimilar metals.

High temperature creep resistant steels; high alloy stainless steels; cryogenic steels; low temperature steels; stainless steels; H/R steels; creep resistant steels; nickel-based alloys; other metals and alloys; welding of ferrous and non-ferrous castings; introduction to corrosion and wear; welding of castings.

### **ENGG907 - Welding of Non-Ferrous Metals and Joining of Non-Metals**

1. Copper and copper alloys.
2. Aluminium and aluminium alloys.
3. Other metals and alloys.
4. Joining processes for plastics.
5. Joining processes for advanced materials - composites & ceramics.
6. Microstructures of welded joints.
7. Joining of coated steels.

Copper and copper-based alloys; aluminium and aluminium-based alloys; joining dissimilar alloys; structures and properties of non-metallic materials and composites; joining of polymers; joining of polymers to metals; joining of ceramics; ceramic-metal joints; methods used for joining of composites and composites to other materials.

### **ENGG908 - Construction and Design (Part 1)**

1. Strength of materials (Part 1) - Concepts and theories.
2. Strength of materials (Part 2) - Failure concepts & Fracture mechanisms.
3. Basics of weld design (Part 1) - Design principles - avoiding failure.
4. Basics of weld design (Part 2) - Viewpoint of fracture mechanics.
5. Design principles of welded structures - basic methods.
6. Design principles Rules and standards - examples.
7. Economic weld design.
8. Joint design - welded connections.
9. Joint design - tolerances, welding symbols and standards.
10. Introduction to fracture mechanics.
11. Fundamentals of fatigue.
12. Overview of design.

Fundamentals of the strength of materials; basics of weld design; design principles for welded structures; joint design; fracture mechanics.

### **ENGG909 - Construction and Design (Part 2)**

1. Behaviour of welded structures under different types of loading.
2. Design of welded structures with predominately static loading.
3. Behaviour of welded structures under dynamic loading.
4. Fatigue strength of welded structures - complex stress history.
5. Design for dynamic loading - worked examples.
6. Design for thermodynamic loading - pressure vessels, etc.
7. Thermodynamic loading - worked examples.
8. Design of lightweight structures - aluminium and its alloys.
9. Aluminium welded structures - case studies.
- 10 Reinforcing-steel welded joints.

Behaviour of welded structures under load; design of welded structures for static loading; effects of dynamic loading; thermodynamically loaded welded structures; reinforced steel welded joints; design of welded aluminium alloy structures.

### **ENGG910 - Fabrication/Applications Engineering (Part 1)**

1. Health and safety issues.
2. Introduction to quality assurance in welded construction basics.
3. Weld quality standards - ISO 9000 vs ISO 3834.
4. Quality control - weld procedure specification and qualification.
5. Welder qualification.
6. Fitness for purpose considerations.
7. Economic aspects of weld fabrication.

Cutting and other edge preparation processes. Quality assurance in welded structures; quality control during manufacture; total quality management. Plant facilities; welding jigs and fixtures. Fume and radiation hazards from welding; health and safety issues.

### **ENGG911 - Fabrication/Applications Engineering (Part 2)**

1. Welding stresses and distortion.
2. Effects of residual stresses on structures.
3. Control of welding restraint.
4. Stress relieving of weldments.
5. Plant facilities.
6. Welding jigs and fixtures, heat treatment.
7. Repair welding.

Welding stresses and distortion; control of welding restraint; stress relieving of weldments. Repair welding; fitness for purpose considerations; economic aspects weld fabrication; economic considerations of high productivity welding; automatic and robotic welding.

### **ENGG 914 - Fabrication/Applications Engineering (Part 3)**

1. Non-destructive testing applied to welding & materials (Part 1).
2. Non-destructive testing applied to welding & materials (Part 2).
3. Non-destructive testing codes and standards.
4. Measurement control and recording.

Non-destructive testing; measurement control and recording.

## FACE-TO-FACE TRAINING MODULE INFORMATION

All students are required to attend 4 one-week “face-to-face” modules during the course. This component consists of four sessions and aims to supplement the distance delivery material by lectures from industry experts, laboratory exercises, case studies, industry visits and presentations on advanced joining technology.

**FACE-TO-FACE – WEEK 1:** The theme of this module will be to reinforce the process and equipment subjects and consists of:

- Laboratory exercises
- Case Studies - process selection
- Lectures from visiting experts on welding process applications and equipment
- Mechanisation and automation laboratory
- Tutorial

**FACE-TO-FACE – WEEK 2:** This module will reinforce the materials weldability subjects and give hands-on practical experience of metallography of welded joints and it will consist of:

- Mechanical testing practicals
- Wear and surfacing case studies
- Lectures of surfacing and weld metallurgy
- Tutorial

**FACE-TO-FACE - WEEK 3:** The module will address welded construction and design. It will include:

- Design case studies
- Lecture from visiting experts on design of welded structures
- Tutorial

**FACE-TO-FACE - WEEK 4:** This module will consolidate the previous sections of the course and concentrate on fabrication application. It will include:

- NDT practicals
- Welding procedure case studies
- Lecture from guest welding engineer
- Tutorial

### COURSE FEES

IIW International Welding Engineer (IWE)	Fee
IWE Course Registration	\$770*
<i>SWT-01 Module 1: Welding Equipment and Processes ( 4 Units)</i>	\$3,960*
<i>SWT-02 Module 2: Materials and their behaviour during welding (3 Units)</i>	\$2,970*
<i>SWT-03 Module 3: Construction and design (2 units)</i>	\$1,980*
<i>SWT-04 Module 4: Fabrication and applications engineering (3 Units)</i>	\$2,970*
IIW International Welding Technologist (IWT)	
IWT Course Registration	\$770*
<i>SWT-05 Module 1: Welding Equipment and Processes ( 4 Units)</i>	\$3,960*
<i>SWT-06 Module 2: Materials and their behaviour during welding (3 Units)</i>	\$2,970*
<i>SWT-07 Module 3: Construction and design (2 units)</i>	\$1,980*
<i>SWT-08 Module 4: Fabrication and applications engineering (3 Units)</i>	\$2,970*
Four One-Week Face-to-Face Training Modules for IWE or IWT (4 Units)	\$6,600*

One-time course registration fee: \$770\*

Fee for each unit of distance education: \$990\*

Fee for each face-to-face training module: \$1,650\*

IIW Australian Authorised National Body (ANB) and WTIA Qualification and Certification (Q&C) Board Examination fee: Written (\$770\*) and oral (\$220\*)

\*All fees quoted in Australian dollars inclusive of Goods and Services Tax

## FUNDING FOR COURSE ATTENDANCE

Two bursaries per year are being made available to fully self-funded Australian permanent resident students, at either IWE or IWT level, by the Welded Structures Foundation. The Foundation was formed to complete the work of the Cooperative Research Centre (CRC) for Welded Structures which supported the original establishment of the IWE/IWT distance education course at the University of Wollongong.

This financial support will be implemented for selected students at the completion of the first, and each subsequent module throughout the course, in the form of a pro-rata discount on enrolment fees for each module, to a total of \$7,500 (GST free), available over a 3-year period from commencement of the course.

Applications, through a fully completed SWT Enrolment Form EF-04, will be considered in turn against the selection criteria on a first-come first-served basis.

*The WTIA National Skills Campaign is a nation-wide roll out of the strategies and outputs of the Targeting Skills Needs in Regions (TSNR) Project conducted by the WTIA in NSW with Federal and State Government sponsorship and the support of industry*

***“WTIA National Skills Campaign”  
Targeting Skills Needs in all Regions to Keep Jobs in Australia***

DISCLAIMER While every effort has been made and all reasonable care taken to ensure the accuracy of the material contained herein, the WTIA shall not be held to be liable or responsible in any way whatsoever and expressly disclaims any liability or responsibility for any injury or loss of life, any loss or damage costs or expenses, howsoever incurred by any person whether the reader of this work or otherwise including but without in any way limiting any loss or damage costs or expenses incurred as a result of or in connection with the reliance whether whole or partial by any person as aforesaid upon any part of the contents of this publication. WTIA reserves the right to cancel training courses due to insufficient registrations or other reasons beyond its control. Confirmation of bookings will be sent to delegates upon registration. WTIA also reserves the right to refuse registrations.



Unit 50, 8 Avenue of the Americas, Newington, NSW 2127  
 PO Box 6165, Silverwater, NSW, 1811 (ABN 69 003 696 526)

Phone: + 61 (0)2 9748 4443 Fax: + 61 (0)2 9748 2858 Email: events@wtia.com.au URL: <http://www.wtia.com.au>

**~ WTIA OzWeld School of Welding Technology (SWT) ~**

**ENROLMENT FORM: EF-04**

(SWT 01,02,03,04,05,06,07,08)

**International Institute of Welding (IIW) International Welding Engineer (IWE) & International Welding Technologist (IWT) Qualifications, IIW Certified IWE and Certified IWT**

**~ Responsible Welding Coordinator (AS/NZS ISO 3834:2008) ~**

1. **PERSONAL DETAILS** Note: *Please use a black or blue pen to fill in the application. Please  tick the appropriate boxes*

Title _____	Given name _____	Middle Name _____	Family Surname _____
Address _____			Postcode _____
Phone ( ) _____	Fax ( ) _____	Mobile _____	
Date of birth _____	Email _____		

2. **TRAINING ENTRY REQUIREMENTS**

To enrol with direct entry in the International Welding Engineer Modules (SWT-01, 02, 03 & 04) & International Welding Technologist Modules ( SWT-05, 06, 07 & 08 ) (Fact Sheet IWE-01 & IWT-01 respectively) and then be eligible to sit examinations to obtain the IIW IWE or IWT Diploma, students should satisfy entry requirements as detailed below. Please complete the questions below:

I satisfy the following entry conditions for direct entry to IIW IWE or IWT Modules (Note: Please submit copies of all relevant documents with this enrolment form. Copies of qualifications NOT issued by WTIA or IIW must be certified\*).

Please  tick below.

**For IWE:**

- Approved First Degree (Bachelor) in Engineering (or related discipline) or eligibility to register as a Chartered Professional Engineer with Engineers Australia or similar overseas recognition

**For IWT:**

- Associate Diploma in Engineering (or related discipline) or equivalent such as the new Advanced Diploma of Engineering (Aust)

I intend to sit the appropriate written examinations  Yes  No

*Note: Any person may enroll to attend these training modules without sitting the examinations or applying for IIW certification. If at a later stage they wish to undertake the examinations or certification, however, they must first meet all the IIW Authorised National Body (ANB) and WTIA Q&C Board conditions.*

3. **CERTIFICATION ENTRY REQUIREMENTS**

Ongoing certification as an IWE/IWT is available in Australia. Students completing this training course, and satisfying the Australian IIW ANB and WTIA Q&C Board joint examination requirements are able to also apply for certification as IIW IWE/IWT, if they provide independent verification that they satisfy the following minimum requirements.

- Have a minimum of two years' experience in the three-year period prior to certification which demonstrates successful application of welding technology at the International Welding Engineer or Technologist level
- Provide evidence of scope of experience in accordance with ISO 14731 *Welding coordination – Tasks and responsibilities* at the IWE/IWT level

If you do not have the necessary experience now, you can apply for certification when the experience requirements are met at a later date. Re-certification will then be due every three years.

*\*Photocopies of documents and photographs can be certified by a Justice of the Peace, police officer, post office manager, doctor or similar professional person. They must print their name, contact number, occupation and date and write "This appears to be a true copy of the original document sighted by me" or "This is a true likeness of (name)", affix an organizational stamp and/or sign each copy or photograph.*



4. VENUES, MODULE DATES AND EXAMINATION DATES

Students successfully completing all the training modules and satisfying the entry requirements may sit examinations jointly organised through the Australian IIW ANB and WTIA Q&C Board for IIW qualification and WTIA Welding Engineer or Technologist qualification. A separate application and payment will be required as well as two recent certified\* passport photographs. Further information and application forms are available through the IIW ANB and will be made available during the course.

**Please tick below to indicate the Course and Module/s in which you wish to enrol** ✓

<b>IIW International Welding Engineer (IWE)</b>		
IWE COURSE REGISTRATION	\$770 INCL GST	
SWT-01 MODULE 1: WELDING EQUIPMENT AND PROCESSES (4 UNITS)	\$3960 INCL GST	
SWT-02 MODULE 2: MATERIALS AND THEIR BEHAVIOUR DURING WELDING (3UNITS)	\$2970 INCL GST	
SWT-03 MODULE 3: CONSTRUCTION AND DESIGN (2 UNITS)	\$1980 INCL GST	
SWT-04 MODULE 4: FABRICATION AND APPLICATIONS ENGINEERING (3 UNITS)	\$2970 INCL GST	
<b>IIW International Welding Technologist (IWT)</b>		
IWE COURSE REGISTRATION	\$770 INCL GST	
SWT-05 MODULE 1: WELDING EQUIPMENT AND PROCESSES (4 UNITS)	\$3960 INCL GST	
SWT-06 MODULE 2: MATERIALS AND THEIR BEHAVIOUR DURING WELDING (3UNITS)	\$2970 INCL GST	
SWT-07 MODULE 3: CONSTRUCTION AND DESIGN (2 UNITS)	\$1980 INCL GST	
SWT-08 MODULE 4: FABRICATION AND APPLICATIONS ENGINEERING (3 UNITS)	\$2970 INCL GST	
FOUR ONE-WEEK FACE-TO-FACE TRAINING MODULE S FOR IWE OR IWT (4 UNITS)	\$6600 INCL GST	

5. COST AND PAYMENT

One-time course registration fee :A\$770 incl GST

Fee for each unit of distance education is A\$990 incl GST

Fee for each face-to-face training module: A\$1650 incl GST

IIW ANB Examination fee: Written (A\$770) and oral (A\$220) incl GST

Payment shall be made upfront for each module. Course enrolment will be acknowledged on receipt of completed enrolment form, supporting documentation and full payment.

**Method of Payment:**

✓ tick  Cheque or Money Order payable to WTIA  MasterCard  Visa  Funds Transfer

Cardholder: \_\_\_\_\_ Amount: \$ \_\_\_\_\_

Card No: \_\_\_\_/\_\_\_\_/\_\_\_\_/\_\_\_\_ Expiry: \_\_\_\_/\_\_\_\_

Signature: \_\_\_\_\_ Date: \_\_\_\_\_

Please invoice company for payment

Contact Person for payment: \_\_\_\_\_ Purchase Order Number \_\_\_\_\_

Company \_\_\_\_\_

Mailing address: \_\_\_\_\_

Ph: \_\_\_\_\_ Fax: \_\_\_\_\_ Email: \_\_\_\_\_

Funds may be transferred to the following account details. Please return a remittance advice to fax: 02 9748 2858 or email [events@wtia.com.au](mailto:events@wtia.com.au). National Australia Bank, BSB No:- 082 330. Account No: 047162875. Branch: 28 George Street, Parramatta, NSW Account Name: Welding Technology Institute of Australia.

I confirm that the information that I have given is correct:	
Signature: _____	Date: _____

**Important Note**

Before mailing the completed enrolment form, please use the following checklist, relevant to the typical documentation to be supplied, to ascertain that your application is complete in all respects. **Applications not accompanied by copies of documents, certified if required (e.g. qualifications/certifications) will not be processed.**

<b>Copies</b> of all relevant transcripts satisfying entry requirement. Copies of qualifications NOT issued by WTIA or IIW must be <b>certified*</b>	
<b>Fee payment</b>	

Post the completed application form to: **WTIA OzWeld School of Welding Technology, PO Box 6165, SILVERWATER NSW 1811** (For further enquiries, contact the WTIA Education and Training Administrator on Tel: 02 9748 4443 or Email: [events@wtia.com.au](mailto:events@wtia.com.au))

For Office use only:	
Approved: Education & Training Manager	Date
Processed: Education & Training Administrator	Date

**CANCELLATIONS AND REFUNDS:** For cancellations received within 10 working days of a course, 100% of the fees will be charged. Another eligible person may attend in lieu of the cancellation. The WTIA OzWeld School of Welding Technology reserves the right to cancel or change dates of any training course due to insufficient registrations or other reasons beyond its control, and also reserves the right to refuse enrolments.